

Lightsource Test Report

Product Infomation

Product Category: LED STRIP	Product Type: LED STRIP
Product Spec: ARCO 9	Product Number: 316
Manufacturer: TECSOLELED S.L.	Buyer: TECSOLELED S.L.

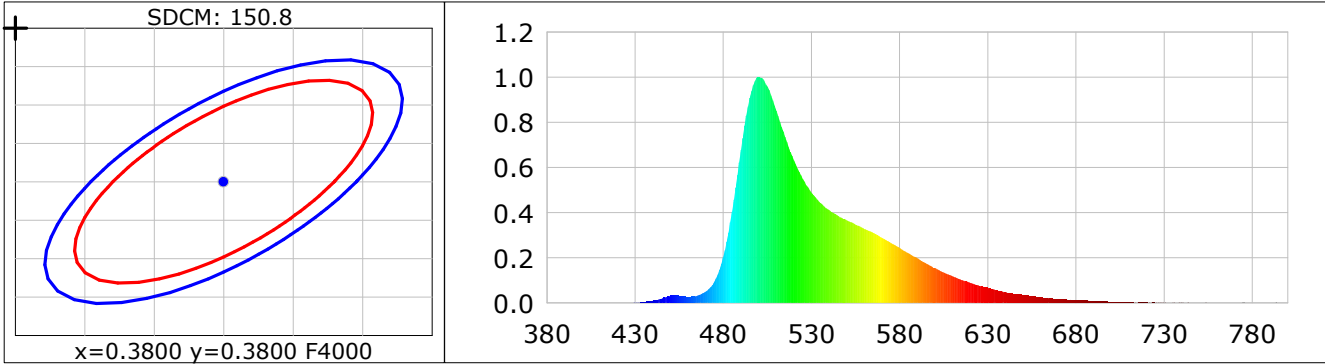
CIE Colorimetric Parameters

Chromaticity coordinates: $x=0.2649$ $y=0.5614$ $u(u')=0.1151$ $v=0.3658$ $v'=0.5488$
 CCT: $T_c=6814K$ ($duv=0.10171$) Color Ratio: $R=0.047$ $G=0.870$ $B=0.083$
 Peak Wavelength: 499.7nm Half Bandwidth: 42.4nm
 Dominant Wavelength: 550.6nm Color Purity: 0.515
 CRI: $R_a=21.6$, $avgR(1\sim14)=5.1$, $avgR(1\sim15)=5.0$ TM30: $R_f=31$, $R_g=38$
 GAI: $GAI_BB_8=11.9$, $GAI_BB_15=15.4$, $GAI_EES=11.7$

R1 =23	R2 =41	R3 =23	R4 =-14	R5 =34	R6 =42	R7 =25	R8 =-1
R9 =-199	R10=-1	R11=-23	R12=38	R13=23	R14=59	R15=4	

 Color Quality Scale: $Q_a=19.2$, $Q_f=23.2$, $Q_p=6.7$, $Q_g=32.4$

Q1 =16	Q2 =20	Q3 =38	Q4 =76	Q5 =68	Q6 =27	Q7 =3	Q8 =1
Q9 =4	Q10=2	Q11=28	Q12=39	Q13=48	Q14=18	Q15=25	



Photometric Parameters

Luminous Flux: 1446.1 lm	Efficiency: 107.14 lm/W	Radiant Power: 3.625 W
Total mains efficacy: 99.21 lm/W	Energy Efficiency Class: F (EU 2019/2015)	

Electric Parameters

Voltage: 24.000V	Current: 0.5624A	Power: 13.50W
Power Factor: 1.0000	Frequency: 0.00Hz	

Test Infomation

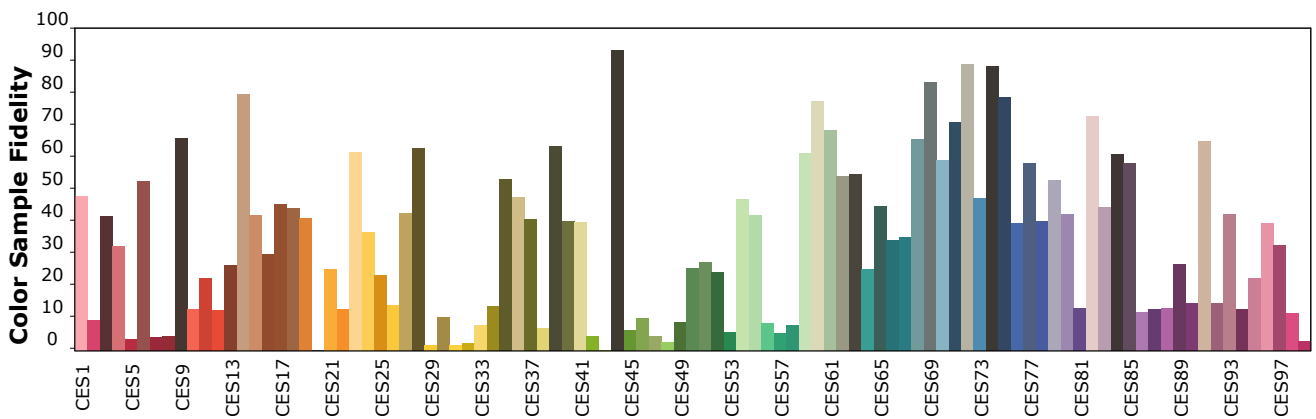
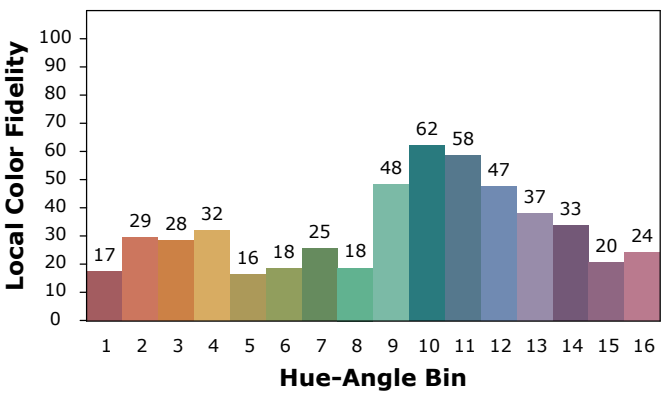
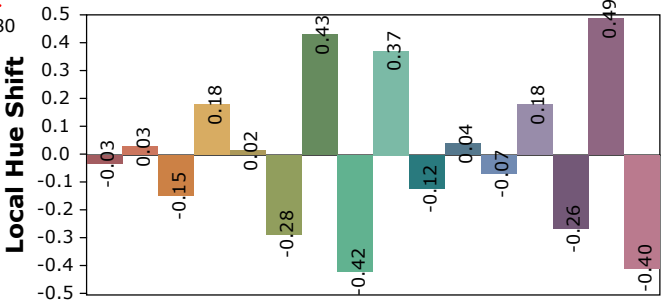
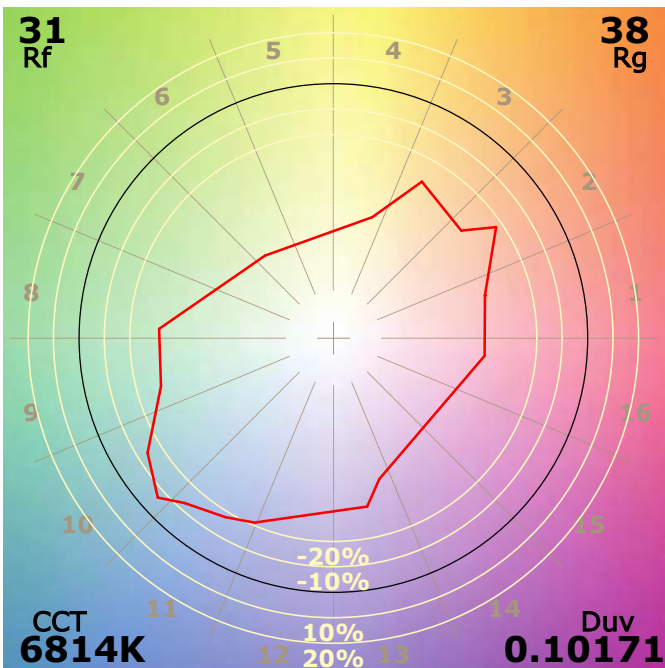
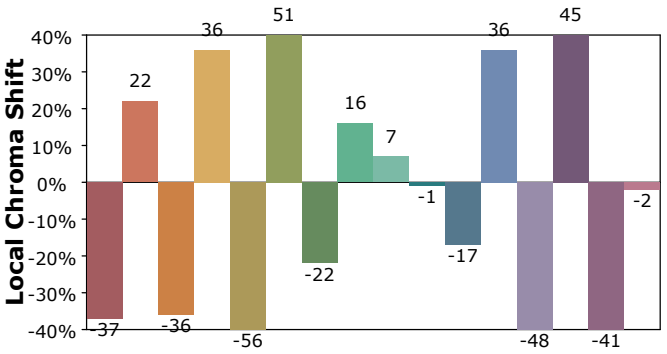
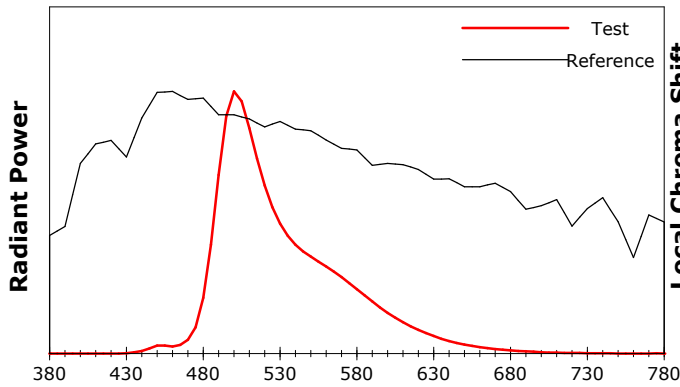
Scan Range: 380~800:1nm	Photometric Method: sphere-spectroradiometer
Stabilization Time: 0 Sec ALC.: 1.0000	Photometric Condition: Sphere diameter: 1.50m, 4PI
Max of Signal: 46066 (2130)	CCD Integration Time: 221.40 ms

IES TM-30-18 Color Rendition Report

Product Information

Product Category: LED STRIP
 Product Spec: 21059602440598
 Manufacturer: TECSOLELED S.L.

Product Type: LED STRIP
 Product Number: 316
 Buyer: TECSOLELED S.L.



Condition: Tx:20.4°C, Ti:18.9°C, R.H.:60%
 Test Lab: TECSOLELED S.L.
 Operator: JORDAN GIL DIAZ

Test Device: Inventfine CMS-2S (Plus)
 Test Time: 2021-11-02 11:01:47
 Inspector: